

PanoCam360A DESIGNED IN BRITAIN. MADE IN BRITAIN.

5 Megapixel 360 Degree Camera

The PanoCam360A 5MP network camera provides up to fourteen simultaneous electronic-Pan-Tilt-Zoom (ePTZ) and Panoramic video streams which may be recorded or viewed live. Multiple ePTZ allows each user to control the camera as if it was their own unique PTZ without interference to the other users.

De-warping is provided within the camera, thus reducing the load on the Network Video Recorder (NVR) system and improving overall performance. Images can also be viewed via a standard web browser i.e no software is required.

The PanoCam360A has no moving parts, so no wear and tear and vastly reduced maintenance costs. The camera's full 360 degree horizontal, 180 degree vertical field of view and industry leading 5 megapixel resolution means camera count can be greatly reduced with minimal blind spots.

The PanoCam360A outputs the full panoramic image for recording purposes, which can be combined with an integrated recording system to provide retrospective ePTZ.



This allows you to go 'back in time' and follow subjects as if you were still viewing live.

Installation can be wall or ceiling mount, surface or flush mount (with optional flush-mount-kit).

Features

- 185° Fisheye Lens
- Up to 10 Presets and Privacy zones
- Alarm in / out
- Vandal resistant die-cast housing (P360B)
- Low profile housing option available for transport applications
- MJPEG, MPEG4, H.264 streaming
- 12.5 Frames Per Second
- 5 Watt PoE or 12Vdc
- Indoor, Outdoor, Surface or Flushmount housing options

Benefits

- Full Hi-Res 360° image stream for post-event analysis
- Wide area coverage with one camera, no blind spots, no moving parts
- Up to 14 live panoramic and ePTZ streams whilst simultaneously recording the full scene
- HTTP API and playback SDK for easy integration with 3rd party NVRs and Video Management Systems
- De-warping in camera reduces network bandwidth and image processing loads on NVRs
- High Performance Platform for 3rd party video analytics (subject to integration)
- Provides Total Situational Awareness - not achievable when using fixed cameras and PTZ domes
- Unsurpassable Post Event Analysis unavailable with traditional CCTV cameras
- Reduces camera count & Infrastructure
- In-camera branding for OEM opportunities

Specifications

Camera

Image Sensor	½.5" CMOS 5MP
Lens	F2.0 185° Fisheye
Responsivity	1.4 V/lux-sec
Max Resolution	2144x1944
Preset Positions	10
Privacy Zones	10

Video

Compression	MJPEG, MPEG-4, H.264
Frame-rate	12.5fps at Max Res
Streaming	Multiple simultaneous ePTZ and Panoramic streams

Video Streams

View Number	View Description
0	2144x1944 Fisheye
1-4	640x480 ePTZ
5-8	320x240 ePTZ
9	640x480 Fisheye
10-11	640x240 180° Panorama
12	1280x240 360° HD Panorama
13	1280x720 HD ePTZ

System Integration

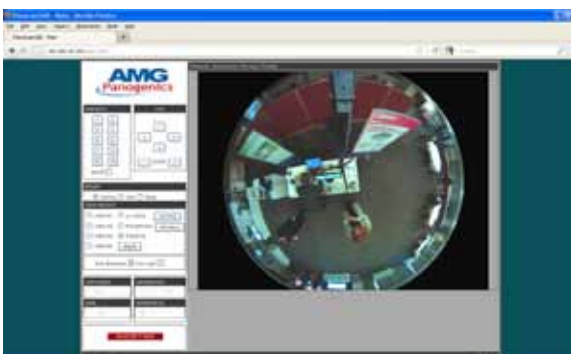
Application Programming Interface	Open HTTP API for integration with NVR and VMS systems
Playback Software Developers Kit	SDK for ePTZ and panoramic view creation in NVR playback software
Alarms	1 x Alarm Input, 1 x Alarm Output
Alarm triggers	External input
Alarm events	File upload via FTP, external output activation, TCP output message

General

Temperature Range	0 to +45 degrees C
Power	PoE IEEE 802.3af Class 2 or 12V DC, Max 5W
Weight	650 grams
Approvals	CE EN55022, CISPR 22 Class B, EN50130-4 FCC Part 15 subpart B, ANSI C63.4 Class B
Size	147.5mm diameter 54mm height

Ordering Guide

P360A	360 Degree internal Camera
CMK001	Ceiling Mount Camera Kit
Add 'DN' to part number for day/night version i.e P360ADN	
For vandal resistant options see PanoCam360B datasheet	



D14488-01